

Spinsolve 80

Optimized Performance combined with highest Versatility.

[show more](#)


[Home](#) » [Products](#) » [Spinsolve family](#)

Discover the Spinsolve family

Spinsolve is a revolutionary multinuclear NMR spectrometer that provides the best performance of any benchtop system available today. The Spinsolve spectrometers come in 90, 80, and 60 MHz models and can be equipped with unique features. With its small footprint, low weight, and low cost you can have powerful, high resolution NMR spectroscopy in the chemistry lab.



Spinsolve 90

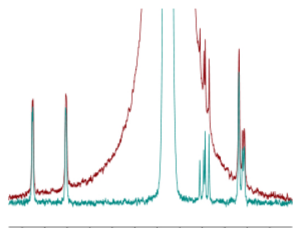


Spinsolve 80



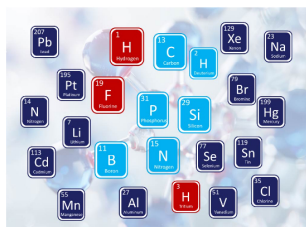
Spinsolve 60

The Spinsolve can be equipped with powerful addons



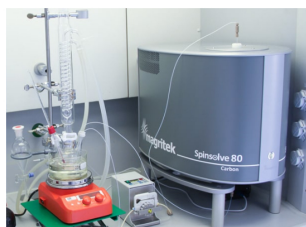
Spinsolve ^{ULTRA}

For applications where high resolution or solvent suppression is required, we offer the Spinsolve ULTRA model, which come with enhanced resolution (50% < 0.2Hz) to get the highest performance with solvent suppression methods.



Multinuclear options

All models offer ^1H and ^{19}F capability on the first channel. Add on the second channel as many nuclei as you need e.g. ^7Li , ^{11}B , ^{13}C , ^{15}N , ^{23}Na , ^{29}Si , ^{31}P



Reaction Monitoring Kit

The Spinsolve systems can be equipped with different flow cells to pump mixture continuously through the system for on-line analysis.



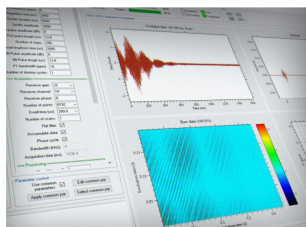
qIDSolve

The qIDSolve software package combines tools for automated data acquisition, identification, quantification and reporting embedded in a fully traceable environment supported by an extensive benchtop NMR spectra database.



Autosampler

Increase your sample measurements throughput by integrating the new fully automated autosampler carousel with your Spinsolve. This automatic sample changer is fully controlled by our Spinsolve software and can handle up to 20 samples.



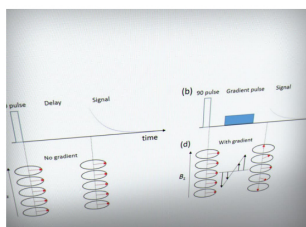
Spinsolve Expert Software

The Spinsolve spectrometer can be controlled by our standard Spinsolve software or by our expert software package.



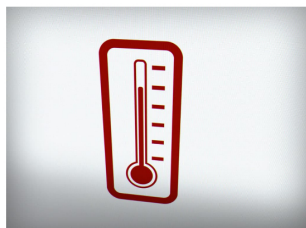
qNMR Spinsolve Software Module

Fully automated quantification in regulated environments with benchtop NMR



Diffusion PFG Gradients

Beside the set of 3 D (x,y,z) pulsed field gradients for gradient enhanced methods, which is included on all Spinsolve systems the Spinsolve can as well be equipped with a stronger pulsed field gradient for diffusion experiments.



Sample temperature control

The Spinsolve models offer the possibility to set the temperature of the probe in a range from RT to 60 °C. This feature allows one to control the temperature of the sample within this range. This is particularly powerful for reaction monitoring where the temperature of the reacting mixture cannot cool down during the pumping process.

Questions about our products?

Get in touch with us anytime!

Call us:

Germany: +49 241 9278 7270

USA: +1 855 667 6835

New Zealand: +64 4 477 7096

Drop an email:

sales: sales@magritek.com

Support: support@magritek.com

Quick finder

[Spinsolve family](#)
[Spinsolve addons](#)
[Spectra Library](#)
[pdf repository](#)
[Testimonials](#)
[Publications](#)
[Blog](#)
[Videos](#)

About us

[Background](#)
[Our People](#)
[Distributors](#)
[Careers](#)
[Intellectual Property](#)
[Privacy Policy](#)
[Software License](#)
[Disclaimer](#)

Applications

[Chemistry Education](#)
[Reaction Monitoring](#)
[Polymers](#)
[Forensic Drug Analysis](#)
[qNMR](#)
[Food](#)
[Petrochemical](#)
[NMR Research](#)

Resources

[Spectra Library](#)
[pdf repository](#)
[Testimonials](#)
[Publications](#)
[Videos](#)
[FAQ](#)
[Science](#)
[Links](#)
[Web Development](#)

