



Performance Report for: <https://zarshan.ir/>

Report generated: Thu, Sep 9, 2021 10:11 AM -0700

Test Server Location: London, UK

Using: Chrome (Desktop) 90.0.4430.212, Lighthouse 7.4.0

A	Performance 97%	Structure 97%	L. Contentful Paint 1.2s	T. Blocking Time 0ms	C. Layout Shift 0.01
----------	---------------------------	-------------------------	------------------------------------	--------------------------------	--------------------------------

Top Issues

IMPACT	AUDIT	
Low	Use a Content Delivery Network (CDN)	6 resources found
Low	Eliminate render-blocking resources	Potential savings of 45ms
Low	Preconnect to required origins	Potential savings of 173ms
Low	Avoid an excessive DOM size	660 elements
Low	Avoid enormous network payloads	Total size was 935KB

Page Details



Total Page Size - 935KB



Total Page Requests - 32



HTML
 JS
 CSS
 IMG
 Video
 Font
 Other

How does this affect me?

Today's web user expects a fast and seamless website experience. Delivering that fast experience can result in increased visits, conversions and overall happiness.

As if you didn't need more incentive, **Google has announced that they are using page speed in their ranking algorithm.**

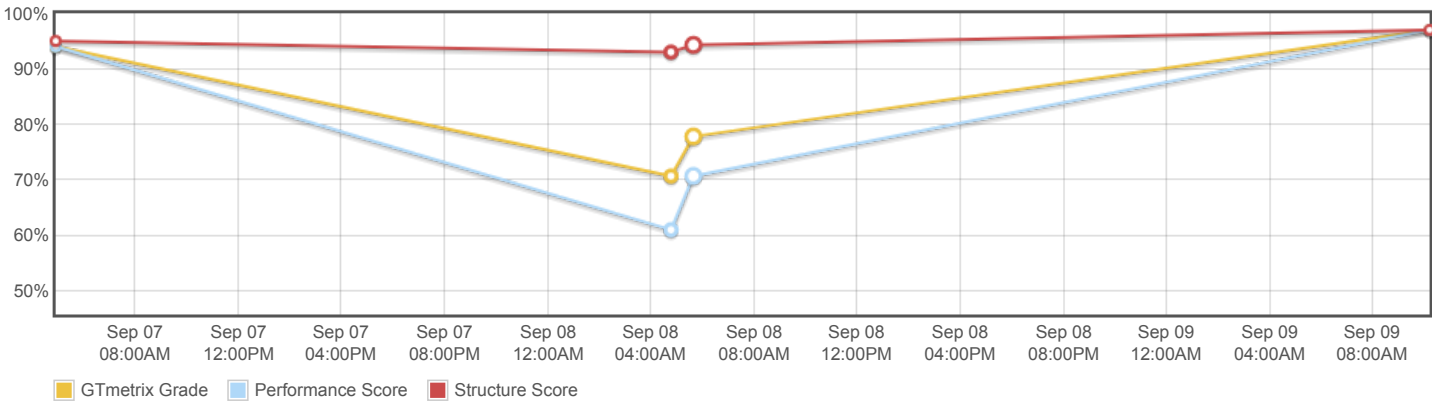
About GTmetrix

CARBON60
THE MANAGED CLOUD COMPANY

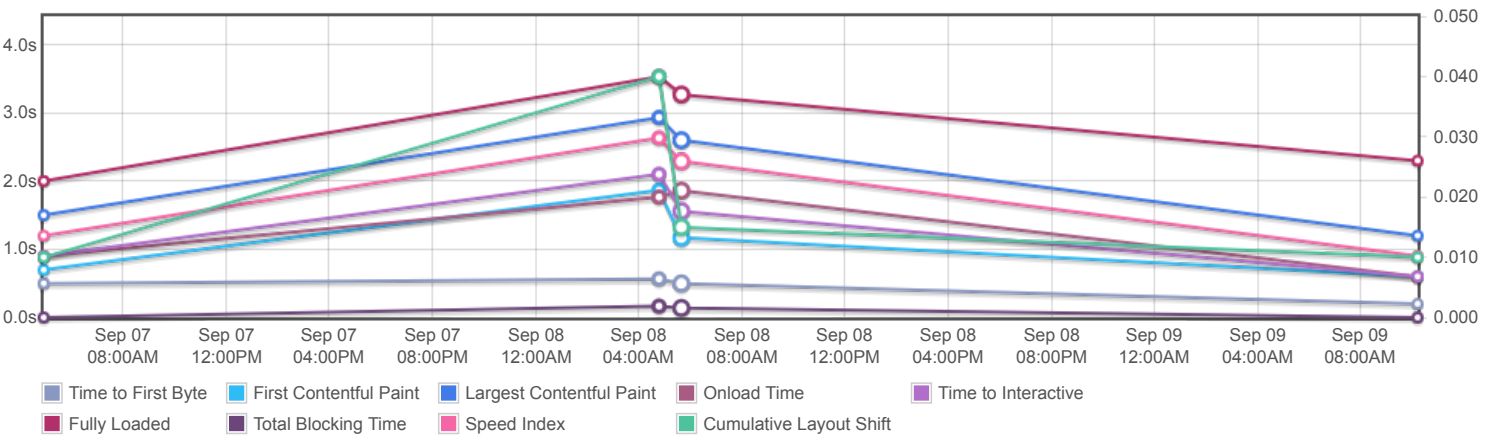
GTmetrix is developed by the good folks at **Carbon60**, a Canadian hosting company with over 25 years experience in web technology.

<https://carbon60.com/>

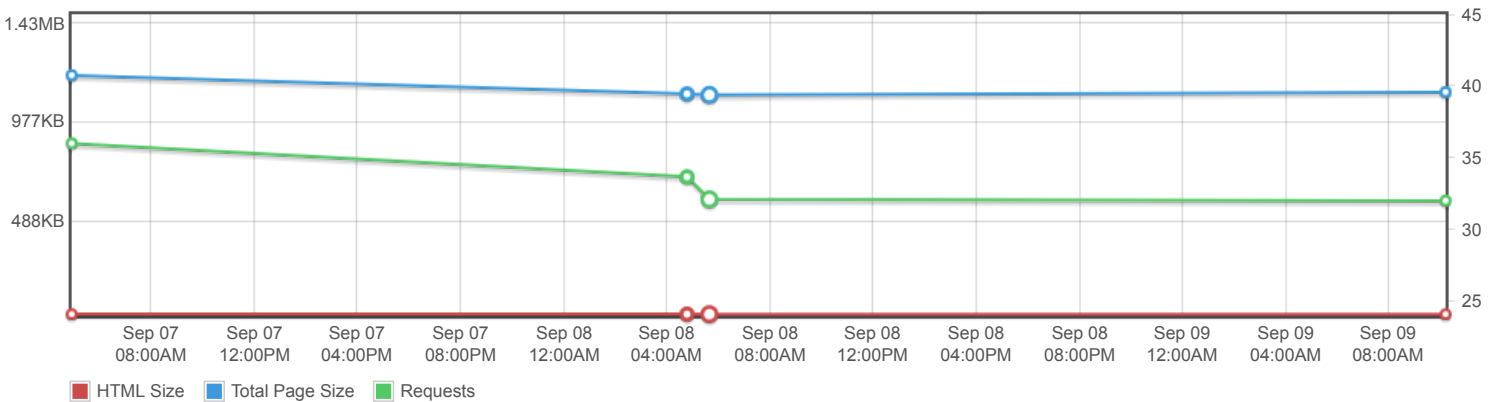
Page scores



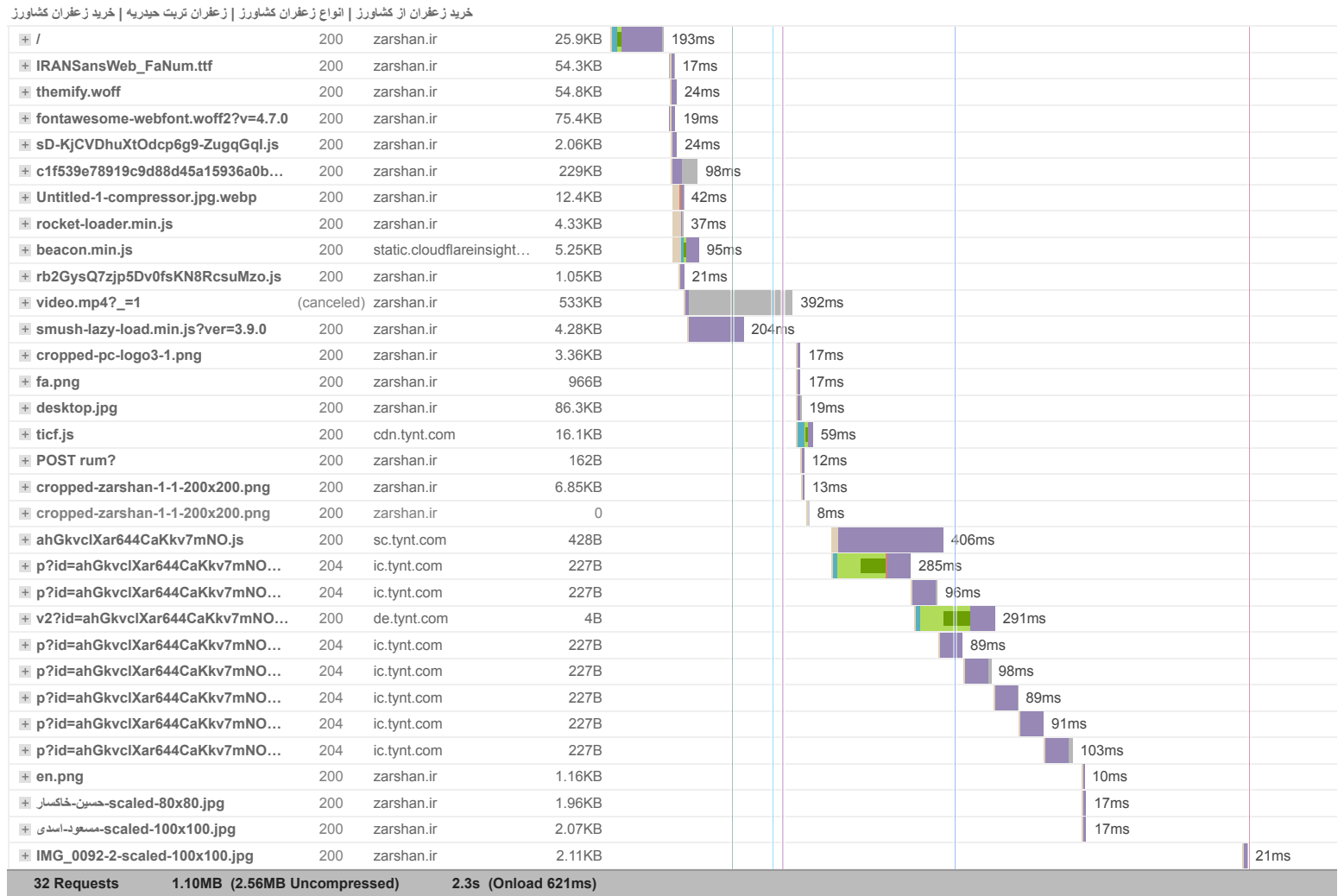
Page metrics

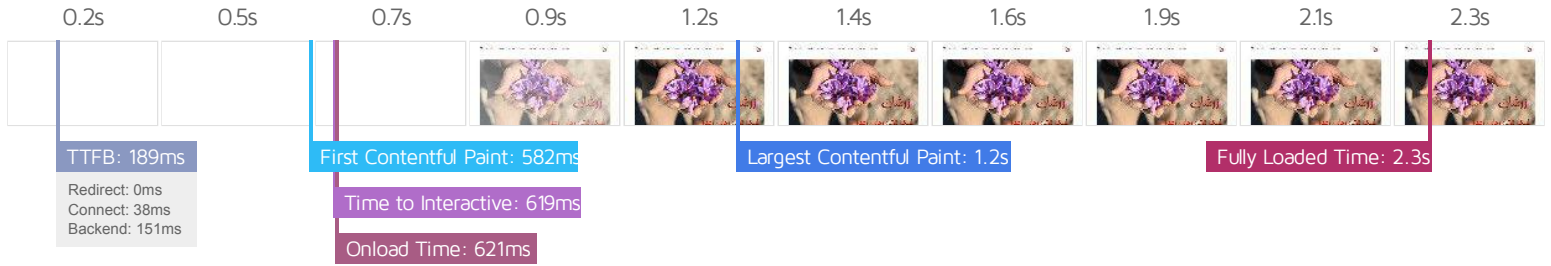


Page sizes and request counts



The waterfall chart displays the loading behaviour of your site in your selected browser. It can be used to discover simple issues such as 404's or more complex issues such as external resources blocking page rendering.





Performance Metrics

First Contentful Paint How quickly content like text or images are painted onto your page. A good user experience is 0.9s or less.	Good - Nothing to do here 582ms	Time to Interactive How long it takes for your page to become fully interactive. A good user experience is 2.5s or less.	Good - Nothing to do here 619ms
Speed Index How quickly the contents of your page are visibly populated. A good user experience is 1.3s or less.	Good - Nothing to do here 937ms	Total Blocking Time How much time is blocked by scripts during your page loading process. A good user experience is 150ms or less.	Good - Nothing to do here 0ms
Largest Contentful Paint How long it takes for the largest element of content (e.g. a hero image) to be painted on your page. A good user experience is 1.2s or less.	OK, but consider improvement 1.2s	Cumulative Layout Shift How much your page's layout shifts as it loads. A good user experience is a score of 0.1 or less.	Good - Nothing to do here 0.01

Browser Timings

Redirect	0ms	Connect	38ms	Backend	151ms
TTFB	189ms	DOM Int.	271ms	DOM Loaded	438ms
First Paint	582ms	Onload	621ms	Fully Loaded	2.3s

IMPACT	AUDIT	
Low	Use a Content Delivery Network (CDN)	6 resources found
Low	Eliminate render-blocking resources	Potential savings of 45ms
Low	Preconnect to required origins	Potential savings of 173ms
Low	Avoid an excessive DOM size	660 elements
Low	Avoid enormous network payloads	Total size was 935KB
Low	Serve static assets with an efficient cache policy	Potential savings of 6.87KB
Low	Ensure text remains visible during webfont load	1 font found
Low	Avoid long main-thread tasks	3 long tasks found
Low	Reduce JavaScript execution time	33ms spent executing JavaScript
Low	Reduce unused CSS	Potential savings of 225KB
Low	Reduce initial server response time	Root document took 151ms
Low	Avoid serving legacy JavaScript to modern browsers	Potential savings of 7.06KB
Low	Avoid large layout shifts	5 elements found
Low	Avoid chaining critical requests	2 chains found
N/A	Largest Contentful Paint element	1 element found
N/A	Minimize main-thread work	Main-thread busy for 738ms
N/A	Reduce the impact of third-party code	Total size was 18.3KB
N/A	User Timing marks and measures	